

Senex commences Cooper Basin western flank drilling program

Release Date: 18 October 2011

Senex Energy Limited (Senex), as Operator of the South Australian permit PRL 15 joint venture, advises that Growler-6 appraisal well commenced drilling on 17 October 2011.

At 6.00 am today the rig was at 178 metres and drilling ahead to surface casing depth of 650 metres.

Growler-6 will appraise the oil bearing potential of the Jurassic Birkhead Formation which produces oil in Growler-1 to -5 inclusive. The well is expected to reach a total depth of 1,850 metres and will include core analysis and extensive downhole testing.

Growler-6 is the first well in Senex's 11 well drilling program in PRL 15 and PEL 104, which comprises five appraisal wells and six exploration wells located in the highly prospective Birkhead channel play on the western flank of the Cooper Basin.

Senex Managing Director Ian Davies said this was the start of an exciting time for the company.

"Excellent preparation by our exploration and drilling team gave us the ability to spud the first well quickly after regaining access to Growler," he said.

Senex Energy holds a 60% interest in PRL 15 and PEL 104 and operates the joint venture in each permit.

For further information contact:

Ian Davies
Managing Director
Senex Energy Limited
Phone: (07) 3837 9900

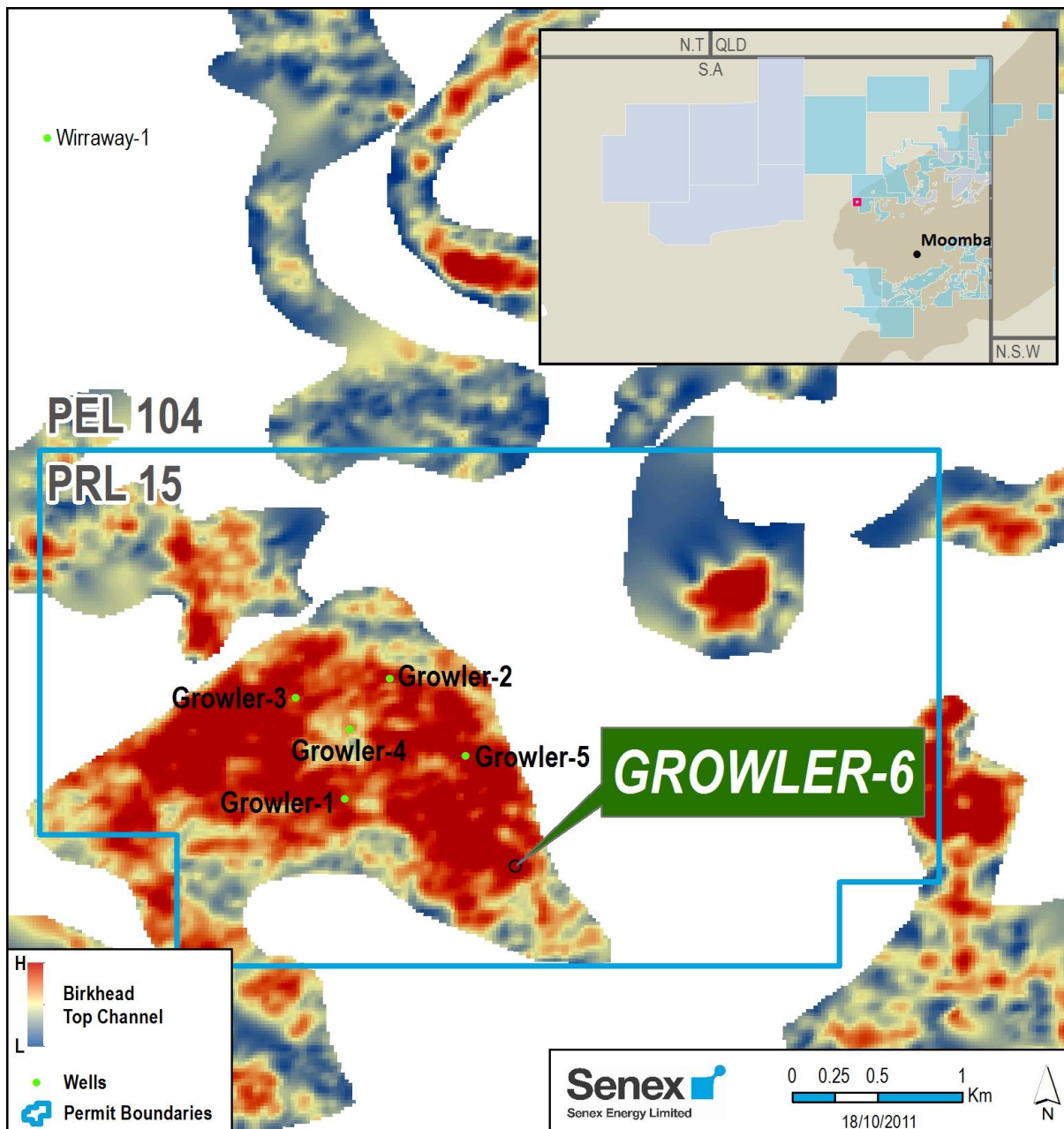


Figure 1: Growler-6 well location