

Monthly drilling report – June 2014

Release Date: 2 July 2014

Key points

- Drilling program for FY14 completed on schedule with 30 oil wells drilled in the Cooper-Eromanga Basin by 30 June 2014
- Tornado-1 exploration well in PEL 111 plugged and abandoned. Encountered excellent Birkhead sands but failed to intersect hydrocarbons
- Sabre-1 exploration well in PEL 111 to be drilled in July 2014

OIL EXPLORATION, APPRAISAL AND DEVELOPMENT

Senex Energy Limited (Senex, ASX: SXY) and its joint venture partners have completed the planned 30 well drilling program for FY14. Details of the oil drilling program for FY15 will be announced prior to the release of the annual financial results, with the first well, the Sabre-1 exploration well, to be drilled during July.

Tornado-1 exploration well (*PEL 111: Senex 60% and operator, Beach Energy Limited (Beach, ASX: BPT) 40%*)

The Tornado-1 exploration well was plugged and abandoned in June after failing to intersect hydrocarbons in the target Birkhead sands, although excellent quality sands were present as predicted following analysis of the Lignum 3D seismic.

EDA Rig 3 commenced drilling the well on 26 May 2014 approximately 4 kilometres south east of Mustang-1 on the western flank of the South Australian Cooper Basin. The well reached total depth of 2,170 metres.

Sabre-1 exploration well (*PEL 111: Senex 60% and operator, Beach 40%*)

The Sabre-1 exploration well will be drilled in mid-July 2014 to test the oil-bearing potential of the mid-Birkhead sandstone approximately 2 kilometres west south west of the Snatcher-9 production well. The vertical well will be drilled by EDA RIG 3 to a total depth of approximately 1,900 metres.

The Sabre prospect will be the first to be drilled in Senex's FY15 campaign.

DRILLING REGISTER

Exploration, appraisal and development drilling undertaken in FY14 is shown below. The location of Senex oil fields is shown in Figure 2.

Oil

Well	Location	Spud date	Type	Result*
Worrior-8	PPL 207	22-Jun-2013	Development	Up to 18 metres in the McKinlay, Namur, Birkhead and Patchawarra
Worrior-9	PPL 207	18-Jul-2013	Exploration	Plugged and abandoned
Burruna-2	PEL 115 (now PPL 251)	6-Aug-2013	Exploration	5.3 metres of net pay in the Namur 3,600 bopd during testing
Acrasia-7	PPL 203	24-Aug-2013	Development	7.1 metres of net pay in the Hutton, Poolowanna, Tinchoo and Arrabury
Ventura-2	PPL 214	28-Aug-2013	Development	13.4 metres of net pay in the Murta and McKinlay
Kobari-2	PEL 516	14-Sep-2013	Exploration	Oil shows over 22 metres
Pirie-1 ¹	PEL 105 (now PRL 108)	30-Sep-2013	Exploration	Moderate oil shows in the Birkhead Formation
Dunlop-1	PEL 113 (now PRL 83)	1-Oct-2013	Exploration	Approx 3 metres of net pay in the McKinlay
Moothandella-4 ²	ATP 794P	5-Oct-2013	Appraisal	10 metres of net pay Murta, Namur and Westbourne
Sprigg-1	PEL 514	6-Oct-2013	Exploration	No net pay calculated with a gas show in the Paning Member. Well suspended pending evaluation of test results
Pirraminta-2	PEL 514	22-Oct-2013	Exploration	Residual oil. Cased and suspended as a future water well
Burruna-3	PEL 115 (now PPL 251)	9-Nov-2013	Appraisal	Interpreted net pay of approximately 3 metres in the lower Birkhead
Acrasia-6	PPL 203	14-Nov-2013	Appraisal	32.8 metres of net pay in the Hutton, Poolowanna and Tinchoo
Vintage Crop-3	PPL 241	24-Nov-2013	Appraisal	4.2 metres of net pay in the Murta and Birkhead
Growler-13	PPL 242	27-Dec-2013	Exploration	Oil-saturated interval intersected
Acrasia-8	PPL 203	30-Dec-2013	Development	29.8 metres of net pay in the Birkhead, Hutton, Poolowanna and Tinchoo

Well	Location	Spud date	Type	Result*
Mirage-5	PPL 213	13-Jan-2014	Appraisal	12.1 meters of net pay in the Murta
Spitfire-4	PEL 104	09-Jan-2014	Appraisal	13.8 metres of net pay in the Birkhead
Growler-12	PRL 15	20-Jan-2014	Appraisal	Intersected an oil saturated interval
Snatcher-11	PPL 240	31-Jan-2014	Appraisal	Approximately 4.5 metre oil-saturated interval intersected in the Birkhead
Mirage-6	PPL 213	01-Feb-2014	Appraisal	11.6 metres of net pay in the Murta
Vintage Crop-4	PEL 516	21-Feb-2014	Appraisal	2.5 metres of net pay in the McKinlay 8.0 metres of net pay in the Murta
Warrior-10	PPL 207	27-Feb-2014	Appraisal	4.5 metres of net pay in the Patchawarra 4.9 metres of calculated net pay in the Murta
Vintage Crop-5	PEL 516	08-Mar-2014	Appraisal	4.3 metres of calculated net pay in the Murta 5 metres of porous sand with oil and gas shows in the McKinlay Member
Spitfire-5	PEL 104	23-Mar-2014	Development	7.2 metres of net pay in the Birkhead
Spitfire-3	PEL 104	24-Mar-2014	Appraisal	6.1 metres of net pay in the Birkhead
Spitfire-6	PEL 104	04-Apr-2014	Development	8.9 metres of net pay in the Birkhead
Mustang-3	PPL 243	19-Apr-2014	Appraisal	Plugged and abandoned
Mustang-2	PEL 111	2-May-2014	Appraisal	6.4 metres of net pay in the Birkhead
Tornado-1	PEL 111	26-May-2014	Exploration	Plugged and abandoned

* Net pay figures represent the latest calculations and may differ from originally published numbers.

Gas

Well	Location	Spud date	Type	Result
Paradise Downs-10 ³	PL 171	13-Aug-2013	Appraisal	Cased and suspended
Kato-3 ⁴	ATP 593P	13-Oct-2013	Exploration	Plugged and abandoned after testing
Kato-4 ⁴	ATP 593P	27-Oct-2013	Exploration	Plugged and abandoned after testing
Indy-3 ⁴	ATP 771P	22-Nov-2013	Exploration	Plugged and abandoned after testing
Indy-4 ⁴	ATP 771P	9-Dec-2013	Exploration	Plugged and abandoned after testing

- 1 Operated by Tellus Resources
2 Operated by Bridgeport Energy

- 3 Operated by QGC
4 Core hole not designed for gas production

Figure 1: Location of Tornado-1 and Sabre-1 exploration wells

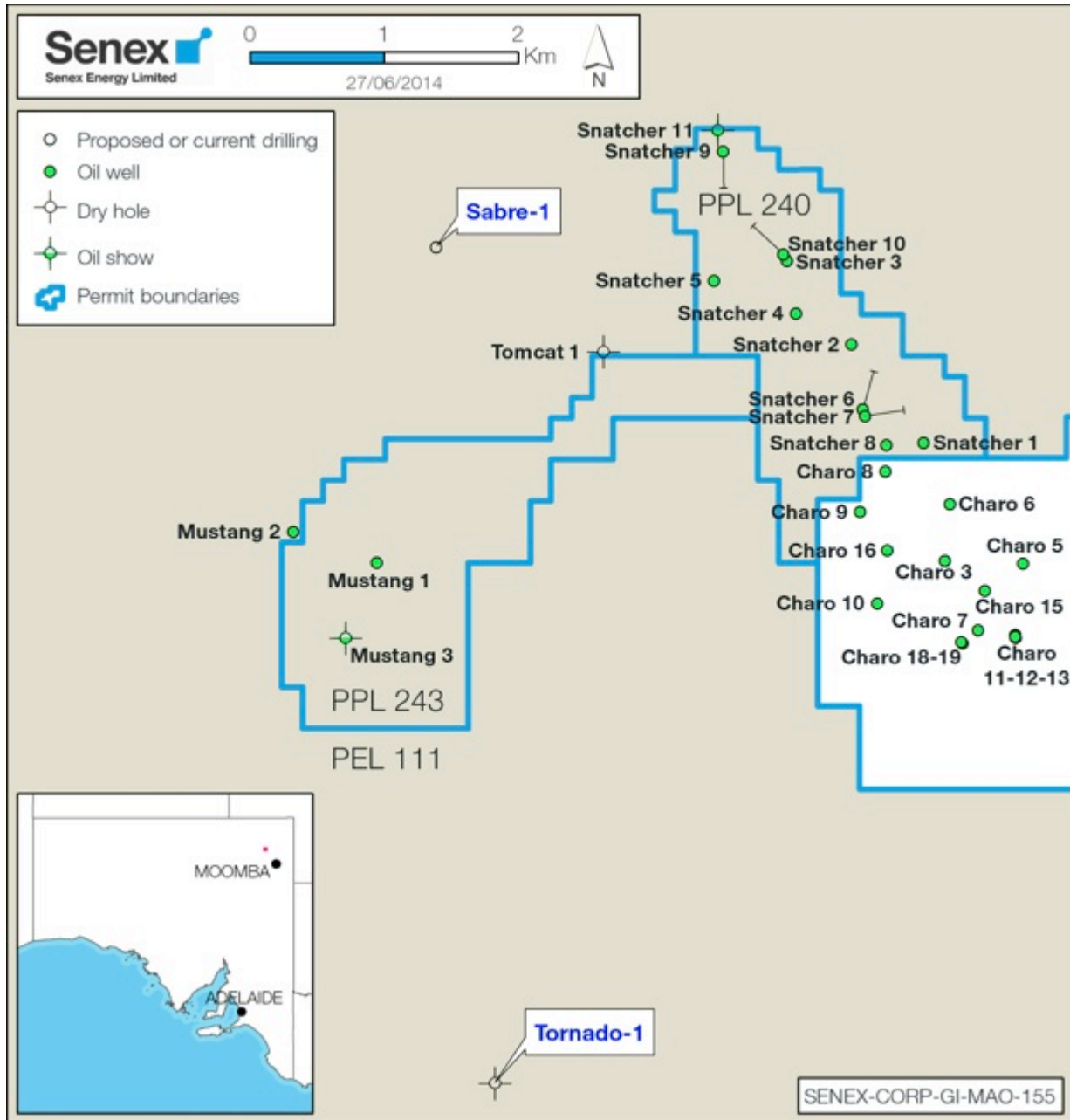
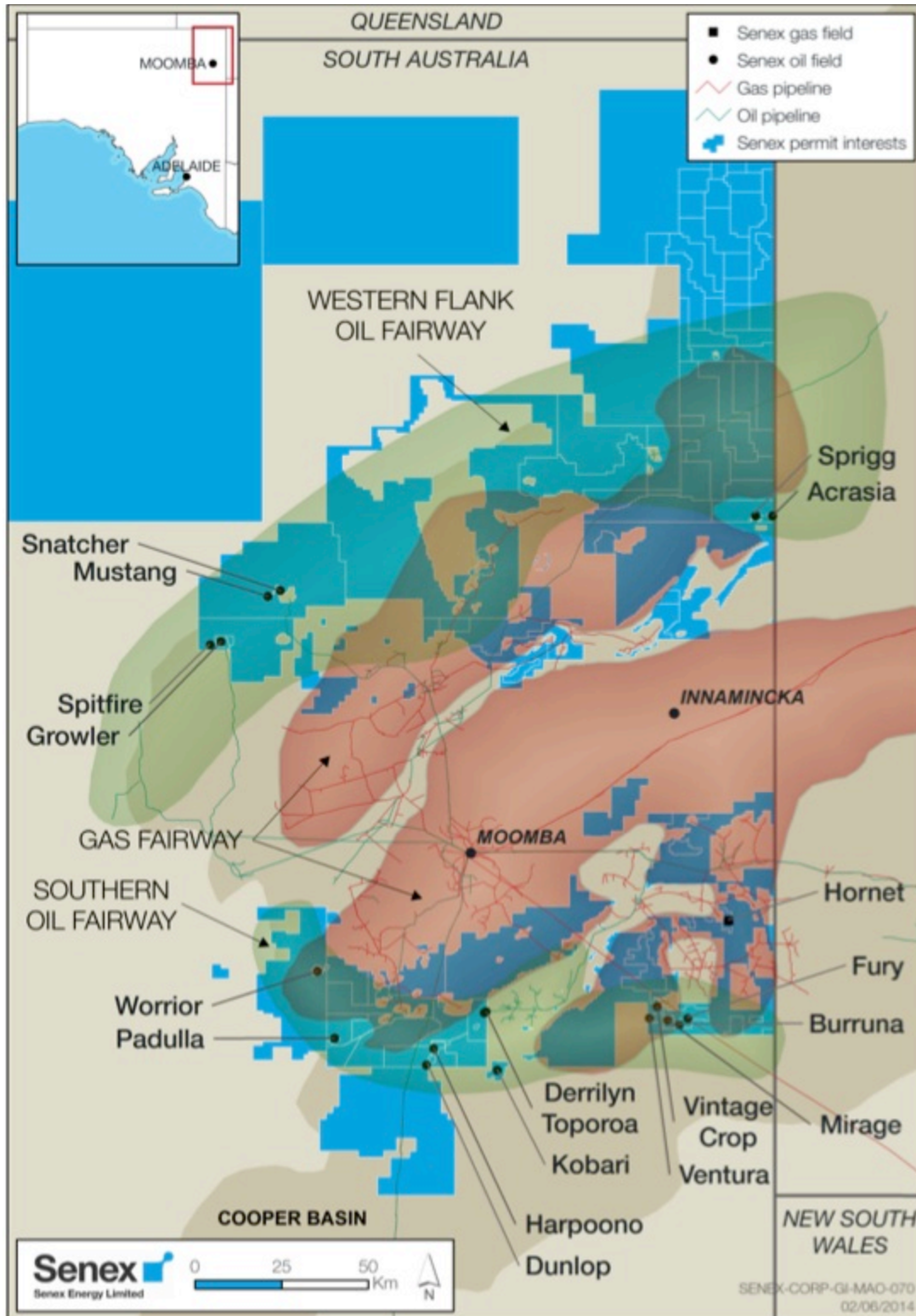


Figure 2: Senex conventional oil fields (operated and non-operated)



For further information contact:

Ian Davies
Managing Director
Senex Energy Limited
Phone: (07) 3837 9900

Andrew Price
Chief Financial Officer
Senex Energy Limited
Phone: (07) 3335 9777

Competent person

Information about Senex's reserves and resources estimates has been compiled in accordance with the definitions and guidelines in the 2007 SPE PRMS. The information is based on, and fairly represents, information and supporting documentation prepared by, or under the supervision of, Mr James Crowley BSc (Hons) who has consented to the inclusion of this information in the form and context in which it appears in this report. Mr Crowley is a qualified petroleum reserves and resources evaluator, a member of Society of Petroleum Engineers and a full time employee of Senex.